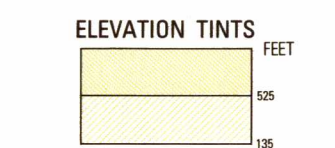
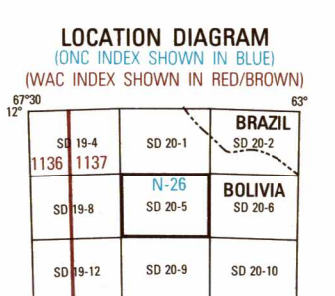


SERIES 1501 AIR SHEET SD 20-5 EDITION 1



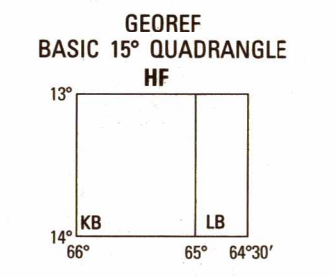
RELIABILITY OF THIS GRAPHIC
Compiled from best available source materials.

GLOSSARY GLOSARIO
Arroyo: intermittent stream, stream
Cuncho: marsh, swamp
Departamento: first-order administrative division
Laguna: lake
Rio: river



CONVERSION OF ELEVATIONS

FEET	METERS	FEET	METERS
1000	305	10000	3048
900	274	9000	2743
800	244	8000	2438
700	213	7000	2133
600	183	6000	1828
500	152	5000	1523
400	122	4000	1218
300	91	3000	913
200	61	2000	608
150	46	1500	453
100	31	1000	308



CAUTION
AIR INFORMATION CURRENT THROUGH 12 MARCH 1993
Consult NOTAMS and Flight Information Publications for the latest air information. The DOD Aeronautical Chart Issuance Manual or NOTAMS Aeronautical Chart Amendment document, for other chart revision information.

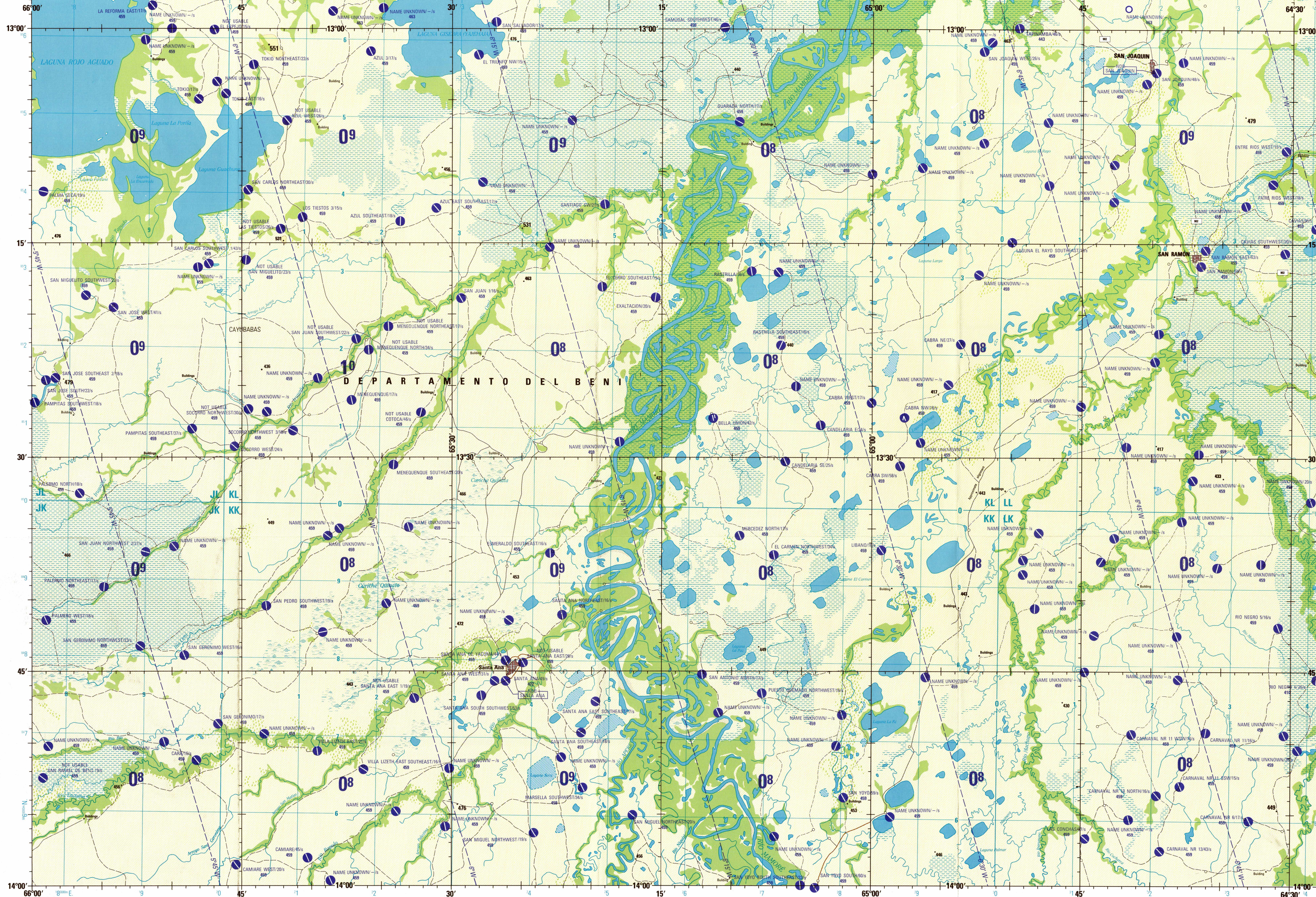
LINEAS DE IGUAL VARIACION MAGNETICA FOR 1990
(Annual rate of change 11' increase)

LINEAS DE IGUAL VARIACION MAGNETICA PARA 1990
(Índice anual de variación aumenta 11')

CAUTION
Vertical elevations, including spot heights, have been extracted from the most reliable available source. Other elevations are shown if they are 200 feet or more above ground level. See caution note.

LIMITED DISTRIBUTION: Distribution authorized to the Department of Defense, U.S. DoD contractors and to U.S. Government Agencies supporting DoD functions, by authority of the Director, Defense Mapping Agency, 30 May 1990. Other requests shall be referred to Headquarters, DMA, ATTN: SP3 Destroyer as "For Official Use Only."

SCALE 1:250,000
SANTA ANA, BOLIVIA
SERIES 1501 AIR SHEET SD 20-5 EDITION 1



Prepared and published by the Defense Mapping Agency Hydrographic/Topographic Center, Bethesda, MD. Compiled May 1993

COORDINATE CONVERSION WGS 84 TO GRID
Grid: Add 102m. E, Add 28m. N
Geographic: UTM Zone 18Q, UTM Zone 18Q

CONVERSION DE COORDENADA WGS 84 A LA RED
Cuadrícula: Sumar 102 m. al Este, Sumar 28 m. al Norte
Geográfica: Zona 18Q del UTM, Zona 18Q del UTM

SAMPLE 1000 METER GRID SQUARE
EJEMPLO DE CUADRADO DE 1000 METROS DE CUADRADO

SAMPLE 1,000 METER REFERENCE
EJEMPLO DE REFERENCIA DE 1,000 METROS

100,000 M. SQUARE IDENTIFICATION
IDENTIFICACION DEL CUADRADO DE 100,000 M.

GRID ZONE DESIGNATION
DESIGNACION DE LA ZONA DE LA CUADRICULA

WHEN REPORTING OUTSIDE THE GRID ZONE DESIGNATION AREA IN WHICH THE GRID LINE, PREFIX OR SUFFIX DESIGNATION IS THE PREFIX, ANTICIPATE THE DESIGNATION OF THE ZONE OF COUNTRIES TO THE REFERENCE ANTIPODE.
CUANDO SE HACE REFERENCIA FUERA DEL AREA DE LA ZONA DESIGNADA DE CUADRICULA EN LA LINEA DE DIVISORIA EN LA LINEA DE DIVISORIA EN LA REFERENCIA ANTIPODE.

20L

ATTENTION
THIS CHART CONTAINS MAXIMUM ELEVATION FIGURES (MEF)
The Maximum Elevation Figures show in quadrangles bounded by ticked lines of latitude and longitude are represented in "TICKED" and "WINDING" of feet above mean sea level. The MEF is based on information available concerning the highest known feature in each quadrangle, including terrain and obstructions (trees, towers, antennas, etc.).

EXAMPLE: 12500

125

ROADS-CAMINOS
Dual Highway Carretera doble
All weather hard surface Transitable todo el año, superficie dura
More than two lanes wide Más que dos vías de ancho
Two lanes wide Dos vías de ancho
One lane wide Una vía de ancho
All weather, loose or light surface Transitable todo el año, superficie ligera
More than two lanes wide Más que dos vías de ancho
Two lanes wide Dos vías de ancho
One lane wide Una vía de ancho
Fair or dry weather, loose surface Transitable en tiempo bueno o seco, superficie ligera
Footpath, trail Sendero, vereda
Route marker Numeración de ruta

4 LANES DUAL
4 VÍAS DOBLES
4 LANES
4 VÍAS
3 LANES
3 VÍAS

RAILROADS-FERROCARRILES
Normal gauge 3'3 3/4" (1.0m)
Estación normal 3 pies 3/4 pulgadas (1.0m)
Station position
Propion de la estación
BOUNDARIES-LIMITES
International-International
First-order administrative division
Division administrativa de primer orden
OTHER FEATURES-OTROS RASGOS
Landmark feature or object; Mine; Tank
Objeto conspicuo; Mina; Tanque
Tunnel; Bridge or viaduct
Túnel; Puente o viaducto
Horizontal control point Punto de control horizontal
RELIEF-RELIEVE
Levee; Sand dune; Arena
Tercel; Páramo o visadero
Spot elevation; Normal; Critical
Cota; Normal; Crítica
HIGHEST KNOWN ELEVATION IS 551 feet at the following coordinates:
Elevación MAS ALTA CONOCIDA es de 551 pies en las siguientes coordenadas:
Geographic Geográfico
Grid Cuadrícula
VEGETATION-VEGETACION
Woods; Scattered trees; Bosques; Árboles dispersos
Orchard; Plantations; Viveyados; Huerto; plantaciones; viveros

SCALE 1:250,000
CONTOUR INTERVAL APPROXIMATELY 135 FEET
EQUIDISTANCIA APROXIMADA DE LAS CURVAS DE NIVEL 135 PIES

USERS SHOULD REFER CORRECTIONS, ADDITIONS, AND COMMENTS FOR IMPROVING THIS PRODUCT TO:
Director, Defense Mapping Agency, ATTN: FR, 613 Lee Highway, Fairfax, VA 22031-2137

ELEVATIONS IN FEET
ELEVACIONES EN PIES

RAILROADS-FERROCARRILES
Single track Multiple track
Una vía Vía múltiple
Station position
Propion de la estación
BOUNDARIES-LIMITES
International-International
First-order administrative division
Division administrativa de primer orden
OTHER FEATURES-OTROS RASGOS
Landmark feature or object; Mine; Tank
Objeto conspicuo; Mina; Tanque
Tunnel; Bridge or viaduct
Túnel; Puente o viaducto
Horizontal control point Punto de control horizontal
RELIEF-RELIEVE
Levee; Sand dune; Arena
Tercel; Páramo o visadero
Spot elevation; Normal; Critical
Cota; Normal; Crítica
HIGHEST KNOWN ELEVATION IS 551 feet at the following coordinates:
Elevación MAS ALTA CONOCIDA es de 551 pies en las siguientes coordenadas:
Geographic Geográfico
Grid Cuadrícula
VEGETATION-VEGETACION
Woods; Scattered trees; Bosques; Árboles dispersos
Orchard; Plantations; Viveyados; Huerto; plantaciones; viveros

HYDROGRAPHY-HIDROGRAFIA
Intermittent lake or pond; Disappearing stream
Lago o laguna intermitente; Corriente que desaparece
Marsh or swamp; Land subject to inundation
Marisma o pantano; Terreno sujeto a inundación
AERODROMES (Military or Civil)
AERODROMOS (Militares o Civiles)
Runway pattern known
Diseño de la pista conocido
EDNA-Name Number
725
50-Length of longest runway to nearest hundreds of feet
Longitud de la pista más larga a los centenas de pies más próximos
Soft or unimproved surface Superficie ligera o no mejorada
Unknown surface Superficie desconocida
Runway pattern unknown
Diseño de la pista desconocido

RADIO AIDS TO NAVIGATION
AYUDAS ELECTRONICAS A LA NAVEGACION
VHF OMNI RANGE (VOR)
EXTENSION DE LA SEÑAL DE VHF OMNI (VOR)
VORTAC VORTAC
TACAN TACAN
VOR with DME VOR con DME
Other facilities Otras facilidades

RADIO FACILITIES FACILIDADES DE RADIO
RADIO RANGE LPFM
EXTENSION DE LA SEÑAL DE RADIO LPFM
MULTIPLE RADIO FACILITIES
MÚLTIPLES FACILIDADES DE RADIO
CONTROLLED AIRSPACE ESPACIO AÉREO CONTROLADO
ADIZ ADIZ
VISUAL AIDS AND OBSTRUCTIONS
AYUDAS VISUALES Y OBSTRUCCIONES
Obstruction Obstrucción
1108-Elevation of obstruction top, above sea level
Elevación de la cima de la obstrucción sobre el nivel del mar
(259)-Elevation of obstruction top, above ground level
Elevación de la cima de la obstrucción sobre el nivel del terreno
Group obstruction Grupo de obstrucciones
Power transmission line Línea transmisora de energía
Aero light, Marine light Luz aérea; Faro

NOTES-NOTAS
Powerlines are shown except within populated place limits.
Other obstructions are shown if they are 200 feet or more above ground level. See caution note.
Se muestran líneas de alta tensión con la excepción de dentro de las áreas en tierra que representan lugares poblados. Se muestran otras obstrucciones si están 200 o más pies sobre el nivel del terreno. Ver advertencia.
On this graphic a line is generally considered as being 8 to 18 feet (2.5 to 5.5 meters) in width.
Referencia a la clasificación de ríos con cuidado.
BOUNDARY REPRESENTATION IS NOT NECESSARILY AUTHORITY.
LA REPRESENTACION DE LIMITES NO DEBE CONSIDERARSE ORIGINAL.
© COPYRIGHT 1993 BY THE UNITED STATES GOVERNMENT.
© EL GOBIERNO DE LOS ESTADOS UNIDOS 1993.
NO SE NEGAN LOS DERECHOS DE AUTOR BASA TITULO "U.S.C."

Printed by the Defense Mapping Agency Hydrographic/Topographic Center, 9-93.

NO COPYHIGHT SYMBOL

1501ASD2005

001