

SERIES 1501 AIR SHEET SD 20-13 EDITION 1



RELIABILITY OF THIS GRAPHIC (as determined by standard practices)

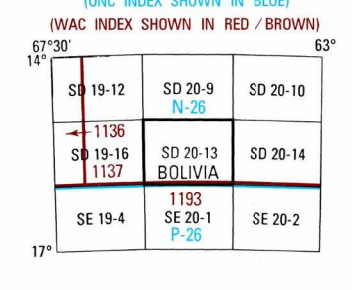
Table with 3 columns: PLOTTING ACCURACY, GRAPHIC FEATURE, and AREA I/II/III. Rows include Contours, Spot heights, and other features.

Horizontal Datum: World Geodetic System 1984 Vertical Datum: Mean Sea Level Transverse Mercator Projection

GLOSSARY GLOSARIO

Table mapping Spanish terms (Arroyo, Departamento, Laguna, Rio) to their English equivalents (stream, first order administrative division, lake, pond, stream).

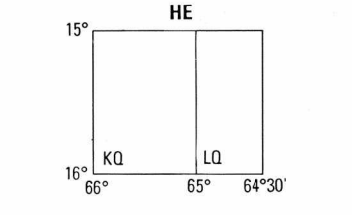
LOCATION DIAGRAM (WAC INDEX SHOWN IN RED / BROWN)



CONVERSION OF ELEVATIONS

Table for converting elevations between feet and meters, with columns for feet and meters.

GEOREF BASIC 15° QUADRANGLE



AIR INFORMATION CURRENT THROUGH 22 MARCH 1994

CAUTION FOR 1990 (Annual rate of change, 11' increase)

CAUTION FOR 1990 (Cambio anual: aumento de 11')

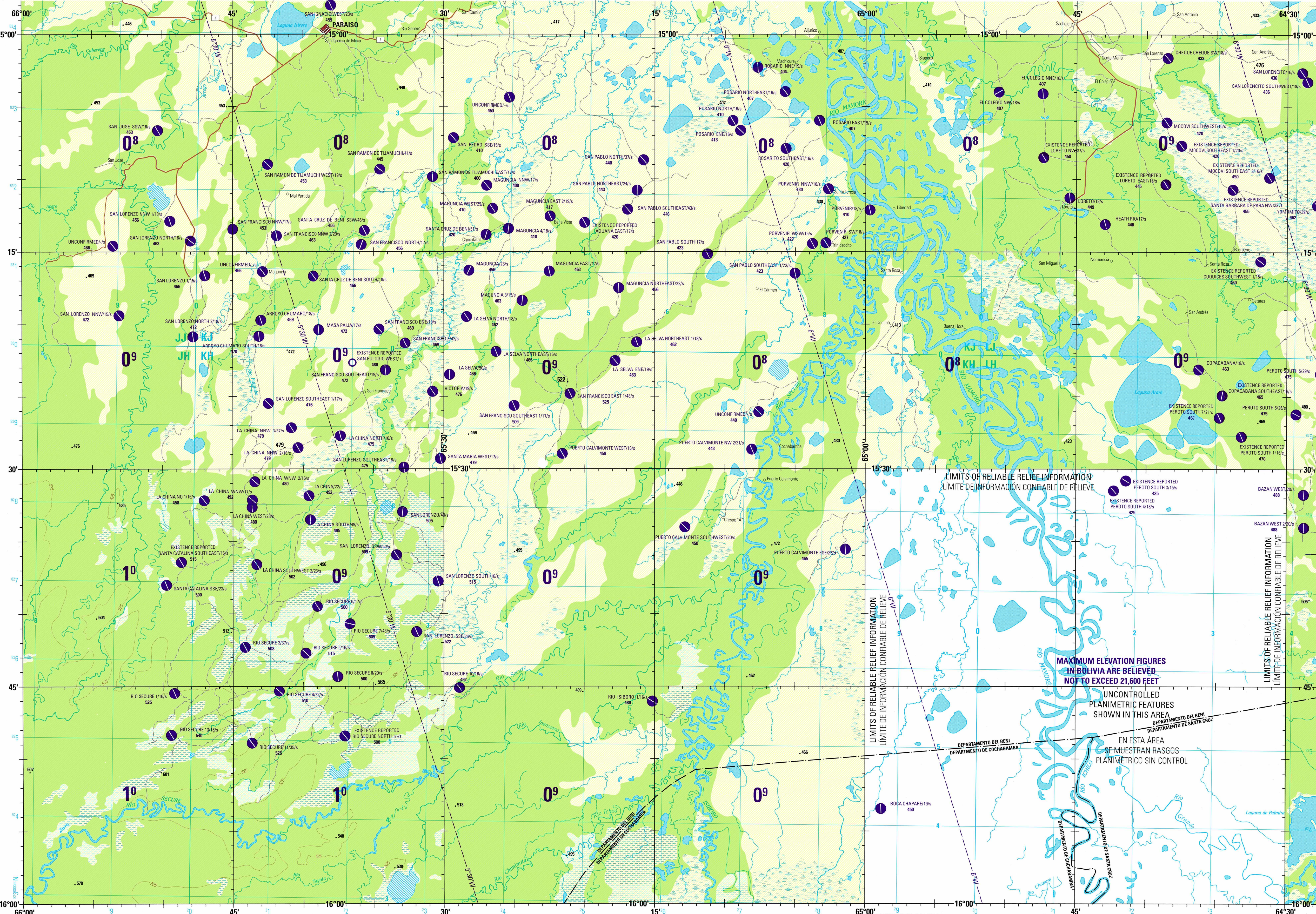
CAUTION Vertical obstructions, including powerlines, have been extracted from the most reliable sources available.

ATTENTION THIS CHART CONTAINS MAXIMUM ELEVATION FIGURES ONLY

Maximum Elevation Figures (MEF) are shown in quadrangles bounded by thick lines of latitude and longitude.

SCALE 1:250,000 LORETO, BOLIVIA

SERIES 1501 AIR SHEET SD 20-13 EDITION 1



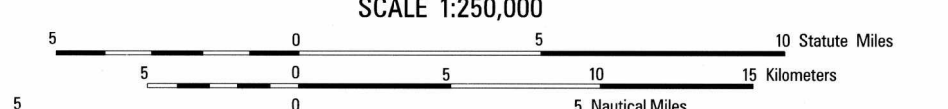
LIMITS OF RELIABLE RELIEF INFORMATION LIMITE DE INFORMACION CONFIABLE DE RELIEVE

MAXIMUM ELEVATION FIGURES IN BOLIVIA ARE BELIEVED NOT TO EXCEED 21,600 FEET

UNCONTROLLED PLANIMETRIC FEATURES SHOWN IN THIS AREA

EN ESTA AREA SE MUESTRAN RASGOS PLANIMETRICOS SIN CONTROL

JOINT OPERATIONS GRAPHIC (AIR)



CONTOUR INTERVAL APPROXIMATELY 135 FEET EODISTANCIA DAS CURVAS DE NIVEL 135 PIES APROXIMADAS

BLUE NUMBERED LINES INDICATE THE 1000 METER UNIVERSAL TRANSVERSE MERCATOR GRID, ZONE 20.

USERS SHOULD REFER TO CORRECTIONS, ADDITIONS, AND COMMENTS TO THE NSA OPERATIONAL HELP DESK.

POPULATED PLACES-LUGARES POBLADOS

- 1st importance Primera importancia LA PAZ
2nd importance Segunda da importancia COCHABAMBA
3rd importance Tercera importancia Uyuni
4th importance Cuarta importancia Atocha
5th importance Quinta importancia Colchani

ROADS-CARRETERAS

- All weather, hard surface Superficie dura para todo clima
Two lanes wide Dos carriles de ancho
One lane wide Un carril de ancho
Fair or dry weather, loose surface Seco o buen clima, superficie suelta

BOUNDARIES-LIMITES

- First order administrative division Division administrativa de primer orden

VEGETATION-VEGETACION

- Woods Bosque
Wet, intermittent lake Pozo Lago intermitente
Land subject to inundation Terreno sujeto a inundacion

RADIO AID TO NAVIGATION

- VHF OMNI RANGE (VOR) VHF OMNI RANGE (VOR)
VORTAC VORTAC

RADIO FACILITIES FACILIDADES DE RADIO

- MULTIPLE RADIO FACILITIES
VISUAL AIDS AND OBSTRUCTIONS
AUXILIOS VISUALES Y OBSTRUCCIONES

TERRAIN ELEVATIONS-ALTITUDES DEL TERRENO

- Spot elevation: Normal, Critical
Highest elevation is UNKNOWN

Printed by the Defense Mapping Agency Hydrographic/Topographic Center, 8-94

NOTES-NOTAS

Powerlines are shown except within populated place tints. Other obstructions are shown if they are 200 feet or more above ground level.

BOUNDARY REPRESENTATION IS NOT NECESSARILY AUTHORITY

© COPYRIGHT 1994 BY THE UNITED STATES GOVERNMENT. NO COPYRIGHT CLAIM UNDER TITLE 17 U.S.C.

NSN 7641014100385 NGA Ref No 1501ASD2013