

POPULATED PLACES - LUGARES POBLADOS

Over 100,000	Más de 100,000	SUCRE
50,000 to 100,000	50,000 a 100,000	SANTA CRUZ
10,000 to 50,000	10,000 a 50,000	Trinidad
2,000 to 10,000	2,000 a 10,000	Barbanzas
Less than 2,000	Menos de 2,000	Towns

ROADS - CARRETERAS

Dual Highway: Autopista de dos carriles
All weather hard surface: Superficie dura para todo clima
More than two lanes wide: Más de dos carriles de ancho
Two lanes wide: Dos carriles de ancho
One lane wide: Un carril de ancho
All weather: Superficie ligera, o suelta para todo clima
Fair or dry weather: Superficie ligera
Soda or buon clima: Superficie suelta
Cart track: Camino para carretas
Footpath: Sendero, senda
Route marker: Marcador de ruta

RAILROADS - FERROCARRILES

Normal gauge 1.44m (4'8 1/2")
Single track: Una vía
Multiple track: Vía múltiple
Elevación normal: Elevación normal
Station position: Posición de la estación
Known: conocido
Discontinued: desconocido
Narrow gauge: Entrencho angosto

BOUNDARIES - LÍMITES

First-order administrative division: División administrativa de primer orden

OTHER FEATURES - OTRAS CARACTERÍSTICAS

School: Escuela
Church: Iglesia
Mosque: Mezquita
Synagogue: Sinagoga
Cemetery: Cementerio
Religious: Religión
Mausoleum: Mausoleo
Hot, kiosk: Kiosco
Landscape feature: Paisaje
Ditch: Canal
Task: Tarea

RELIEF - RELIEVE

Spot elevation: Elevación puntual
Normal: Normal
Critical: Crítico

TERRAIN ELEVATIONS - ALTITUDES DEL TERRENO

Spot elevation: Elevación puntual
Normal: Normal
Critical: Crítico
Highest known elevation is 623 feet at the following coordinates:
Mayor altitud conocida es de 623 pies en las siguientes coordenadas:
Geographic: Geográficas
Grid: Cuadrícula

VEGETATION - VEGETACIÓN

Woods: Bosque
Orchard: Huerto
Scrub: Matorral
Habitat: Hábitat

HYDROGRAPHY - HIDROGRAFÍA

Well: Pozo
Spring: Manantial
Swamp: Terreno sujeto a inundación
Marine: Terreno sujeto a inundación

AERODROMES (Military or Civil) - AERODROMOS (Militares o Civiles)

Runway pattern known: Diseño de pista de aterrizaje conocido
EDNA-Name: Nombre
EDNA-Number: Número
50-Length of longest runway to nearest hundreds of feet
Longitud de la pista más larga a las centenas de pies más próximas
Surface: Superficie
Soft or unimproved surface: Superficie suelta o no mejorada
Unknown surface: Superficie desconocida

VISUAL AIDS AND OBSTRUCTIONS - AUXILIOS VISUALES Y OBSTRUCCIONES

Obstruction: Obstrucción
1033-Elevation of obstruction top, above sea level
Altitud de obstrucción punta, sobre el nivel del mar
1350-Elevation of obstruction top, above ground level
Altitud de obstrucción punta, sobre el nivel del suelo
Group obstruction: Grupo de obstrucciones

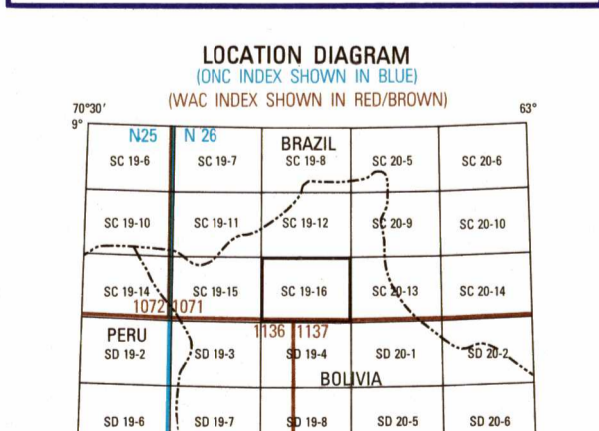
Radio facility obstruction: Obstrucción de facilidades de radio
Power transmission line: Línea de alta tensión

CAUTION
Vertical obstructions, including powerlines, have been omitted from this map. Reliable sources available however, there is no assurance that all are shown, or that their location or height are exact.

CAUTION
AIR INFORMATION CURRENT THROUGH 15 JULY 1992
Consult NOTAMS and Flight Information Publications for the latest information, the 500 Aeromedical Chart Updating Manual or MOP (D.A.) Aeromedical Chart Amendment documents, for other chart revision information.

LINES OF EQUAL MAGNETIC VARIATION FOR 1990
(Annual rate of change 11' increase)
LÍNEAS DE IGUAL VARIACIÓN MAGNÉTICA PARA 1990
(Cambio anual, aumento de 11 minutos)

ATTENTION
THIS CHART CONTAINS MAXIMUM ELEVATION FIGURES (MEF)
The Maximum Elevation Figures are shown in quadrangles bounded by ticked lines of latitude and longitude. The MEF is based on information available concerning the highest known feature in each quadrangle, including terrain and obstructions there, towers, antennas, etc.
ELEVATION: 1250 feet
125



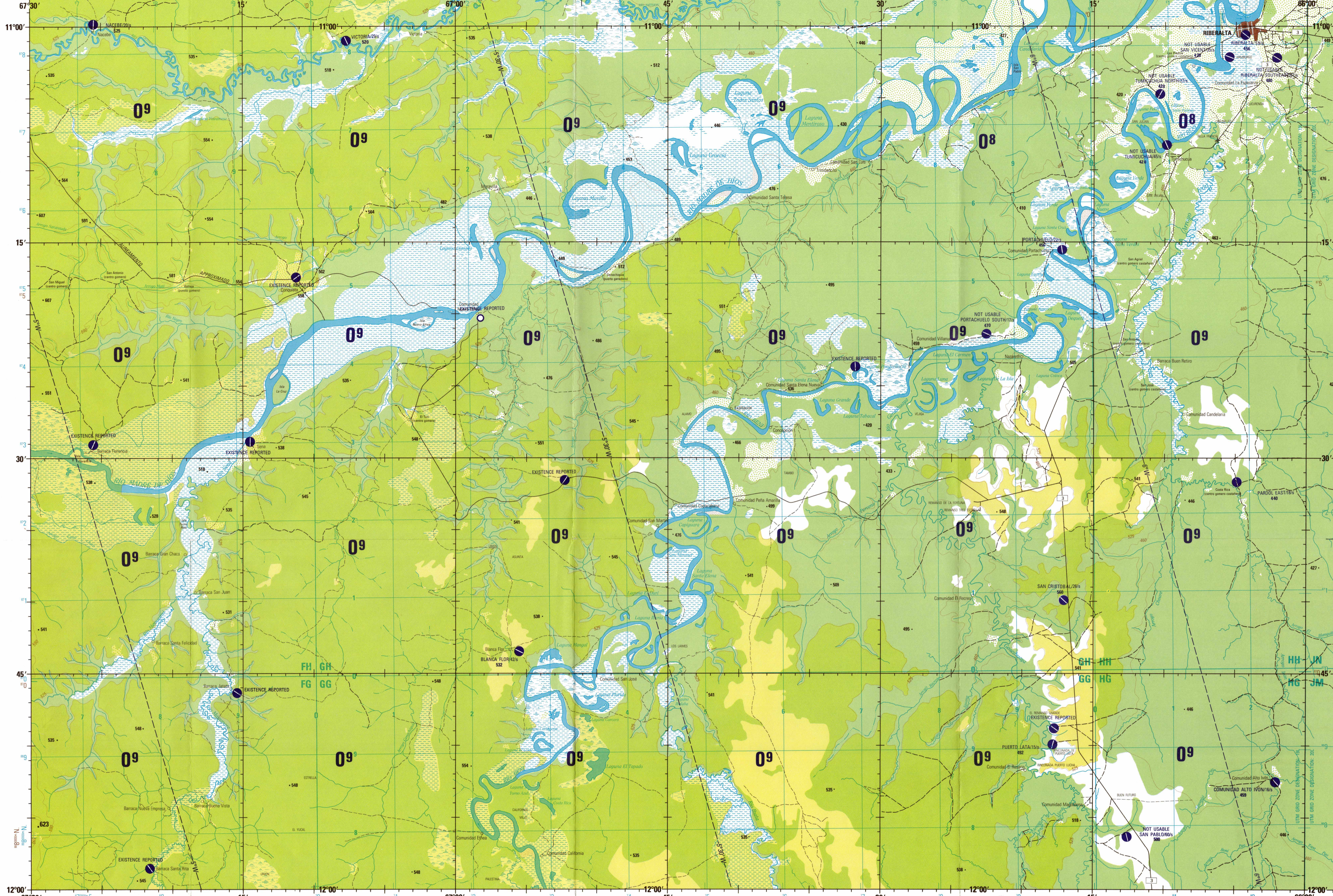
LIMITED DISTRIBUTION: Distribution authorized to the Department of Defense, U.S. DoD contractors and to U.S. Government Agencies supporting DoD functions by authority of the Director, Defense Mapping Agency, 30 May 1990. Other requests shall be referred to Headquarters, DMA, ATTN: SOP. Destroy as "For Official Use Only"

CONVERSION OF ELEVATIONS

FEET	METERS	FEET	METERS
1000	305	10000	3048
500	152	5000	1524
200	61	2000	610
100	30	1000	305
50	15	500	152
20	6	200	61
10	3	100	30

SCALE 1:250,000
CONQUISTA, BOLIVIA

SERIES 1501 AIR
SHEET SC 19-16
EDITION 1



Prepared and published by the Defense Mapping Agency Hydrographic/Topographic Center, Bethesda, MD. Compiled 1992.

JOINT OPERATIONS GRAPHIC (AIR)

SCALE 1:250,000
ELEVATIONS IN FEET / ELEVACIÓN EN PIES

CONTOUR INTERVAL APPROXIMATELY 65 FEET
CURVA DE NIVEL 65 PIES APROXIMADOS

RE-BROWN NUMBERED TICKS INDICATE THE 1000 METER UNIVERSAL TRANSVERSE MERCATOR GRID, ZONE 19, WORLD GEODETIC SYSTEM ELLIPSOID; LAS LÍNEAS AZULES NUMERADAS INDICAN LA CUADRÍCULA UTM DE 1000 METROS, ZONA 19, ELIPSOIDE DEL SISTEMA GEODÉSICO MUNDIAL.

RE-BROWN NUMBERED TICKS INDICATE THE 1000 METER UNIVERSAL TRANSVERSE MERCATOR GRID, ZONE 19, PROVISIONAL SOUTH AMERICAN DATUM 1961, INTERNATIONAL ELLIPSOID.
LOS TRAZOS ROJOS NUMERADOS INDICAN LA CUADRÍCULA UTM DE 1000 METROS, ZONA 19, DATO PROVISIONAL SUDAMERICANO DE 1961, ELIPSOIDE INTERNACIONAL.

USERS SHOULD REFER CORRECTIONS, ADDITIONS, AND COMMENTS FOR IMPROVING THIS PRODUCT TO:
US Users: Director, Defense Mapping Agency, ATTN: PR, 8613 Lee Highway, Fairfax, VA 22031-2137
UK Users: Directorate of Military Survey, Ministry of Defence, Elmwood Avenue, FELTHAM, Middlesex, England TW13 7AE

RELIABILITY OF THIS GRAPHIC
Compiled from best available source materials.
Horizontal Datum: World Geodetic System
Vertical Datum: Mean Sea Level
Transverse Mercator Projection

GEOREF
BASIC 15° QUADRANGLE
11° 15' N
67° 30' W

ELEVATION TINTS

105	100
95	90
85	80
75	70
65	60
55	50
45	40
35	30
25	20
15	10
5	0

GLOSSARY

Alinamiento aproximado	approximate alignment	Galpón(es)	large shed(s)
Arroyo	stream	Granja agrícola	agricultural farm
Balsa	ferry	Granja ganadera	cattle farm
Baranca	barrack	Herbía tropical	tropical vegetation
Cancha de fútbol	soccer field	Iglesia	church
Capilla	chapel	Iglesia evangélica	evangelical church
Cementerio	cemetery	Isla	island
Centro goerno	rubber processing place	Laguna	lake, intermittent lake, lagoon
Centro goerno castaño	rubber and chestnut processing place	Municipio municipal	municipal
Cerca	fence	Misión lingüística	school
Colonia	secondary school	Motor de luz	power generator
Comunidad	community	Noria	well
Corporación	corporation	Numeradas	numerous
Carcho	swamp	Orden misionero Suiza	mission
Deposito de almendra	almond grove	Palmar	palm grove
Escuela	school	Pastoral	pasture
		Pozo	well
		Puerto	port
		Puerto abandonado	abandoned place
		Puerto agro goerno castaño	rubber processing place and chestnut distribution center
		Puerto ganadero	cattle post
		Puerto goerno	rubber processing place
		Puerto goerno abandonado	abandoned rubber processing place
		Puerto goerno castaño	rubber processing place
		Quebrada	stream, intermittent stream
		Rancho	ranch
		Revestimiento suave	soft surface
		Rio	stream
		Ruinas	ruins
		Tanja	textile factory
		Torre	tower
		Vado	ford

Printed by the Defense Mapping Agency Hydrographic/Topographic Center, 9-92
NOTES - NOTAS
Powerlines are shown except within populated place tints. Other obstructions are shown if they are 200 feet or more above ground level. See caution note.
Se muestran las líneas de alta tensión con excepción de dentro de las zonas edificadas (tinta roja). Se muestran otras obstrucciones si están 200 pies o más sobre el nivel del terreno. Ver advertencia.
On this graphic a lane is generally considered as being 2.5 meters (8 feet) in width.
En este gráfico se considera que una vía tiene 2.5 metros (8 pies) de ancho.
BOUNDARY REPRESENTATION IS NOT NECESSARILY AUTHENTIC.
LA REPRESENTACIÓN DE LÍMITES NO DEBE CONSIDERARSE OFICIAL.

